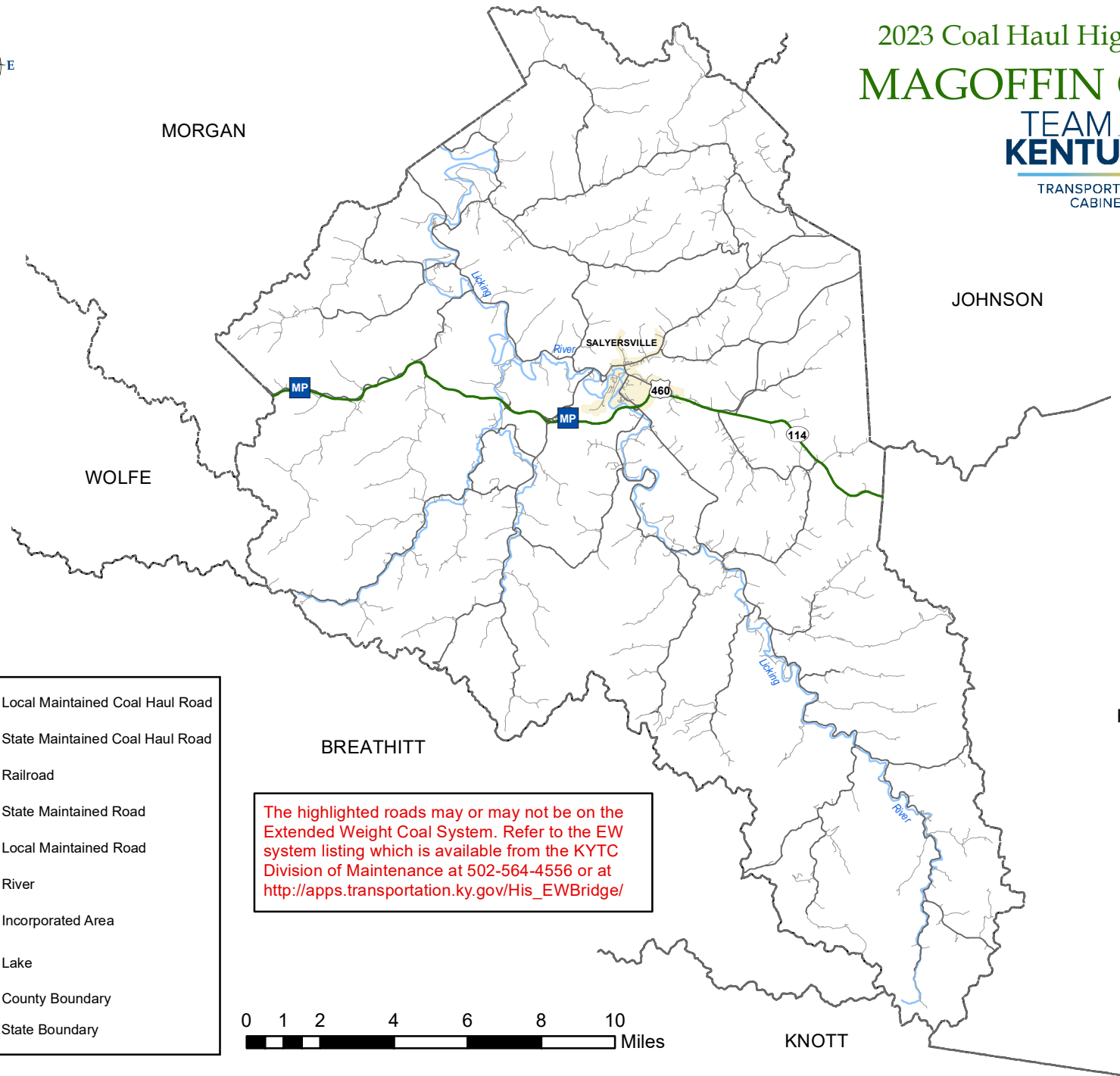




2023 Coal Haul Highway System MAGOFFIN COUNTY



- Local Maintained Coal Haul Road
- State Maintained Coal Haul Road
- Railroad
- State Maintained Road
- Local Maintained Road
- River
- Incorporated Area
- Lake
- County Boundary
- State Boundary

The highlighted roads may or may not be on the Extended Weight Coal System. Refer to the EW system listing which is available from the KYTC Division of Maintenance at 502-564-4556 or at http://apps.transportation.ky.gov/His_EWBridge/

